



Email: [info@lisburnu3a.org](mailto:info@lisburnu3a.org)

Website: <https://www.lisburnu3a.org/>

**U3A MONTHLY MEETINGS** - beginning at 2.00pm on the last Thursday of every month in Laganview Enterprise Centre, 69 Drumbeg Drive, Old Warren

**The next meeting is on Thursday 28<sup>th</sup> August.** (sign-in from 1:40 onwards) Remember to arrive early enough to sign in (for insurance reasons) and sign up for activities, pay fees etc. **before the meeting which begins promptly at 2pm.**

**Don't forget** to bring your name badge and cup, complimentary refreshments are served before the meeting starts.

**The speaker for the August meeting is Liz Weir a Storyteller from Cushendall.**



**Thank you to the Tai Chi Group who will be at the sign-in desk and hosting the refreshments this month.**

Editors Comment -: *Serving tea whilst standing on one leg, I must see that.*

<b>EMAILS:</b>	<a href="mailto:chair@lisburnu3a.org">chair@lisburnu3a.org</a>	<a href="mailto:info@lisburnu3a.org">info@lisburnu3a.org</a>	<a href="mailto:editor@lisburnu3a.org">editor@lisburnu3a.org</a>	<a href="mailto:membership@lisburnu3a.org">membership@lisburnu3a.org</a>
<b>MEMBERSHIP</b>				<b>Irene Davidson</b>
<p><b>Welcome to our newest members!</b></p> <p>★ Catherine Donaldson ★ Patricia Shane ★ Clive Baldock ★</p> <p>★ David Collins ★</p>				
<b>EMAILS:</b>	<a href="mailto:chair@lisburnu3a.org">chair@lisburnu3a.org</a>	<a href="mailto:info@lisburnu3a.org">info@lisburnu3a.org</a>	<a href="mailto:editor@lisburnu3a.org">editor@lisburnu3a.org</a>	<a href="mailto:membership@lisburnu3a.org">membership@lisburnu3a.org</a>

---

## GROUP LEADER UPDATES

If the group activity you are interested in, has not written anything for the 'Group Leader Updates' which follow, then you can contact them directly from the 'Activity Group Leaders - Contact Details' on the last page.

---

### ANTIQUES AND COLLECTABLES

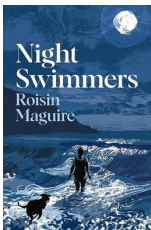
#### GROUP LEADER - JACQUI TOWNSLEY

Our next meeting on **Wednesday 10<sup>th</sup> September 2025** is a visit to **Wilsons Yard**, 123 Hillsborough Road, Dromore. Family run and in their fourth decade of doing business, Wilsons Yard supply a multitude of quality, individual, spectacular products and market throughout the world.

**Meet at Wilsons Yard at 11.00 am** and enjoy a leisurely browse through their unique stock of antique, vintage and architectural salvage items.

### BOOK GROUP 1

#### GROUP LEADER – HILARY PRESTON



Book Group 1 met in a members home to discuss 'The Homemade God' by Rachel Joyce.

We all enjoyed reading this book, even though some of the themes were difficult and sad. We all felt that family is so important even when it falls apart.

Next month we will be discussing 'Night Swimmers' by Roisin Maguire

### BOOK GROUP 2

#### GROUP LEADER - JOAN BRYSON



Our September meeting is on **Tue 30th at 10.30am**. Our book is 'Long Island' by Colm Toibin but we suggest that everyone re-acquaints themselves with its pre-sequel 'Brooklyn'. 'Long Island' is set in 1970s New York and Wexford with Toibin revisiting the characters of his earlier book after 20 years. They are now middle aged rather than coming of age and the intervening time has changed both countries and characters. A family crisis brings Eilas back to Ireland with her teenage children who give the perspective of a younger generation. The author is renowned for his creation of rounded people with female characters being particularly strong.

### BOWLING

#### GROUP LEADERS - FRASER SHANNON - BILL INGLESTON

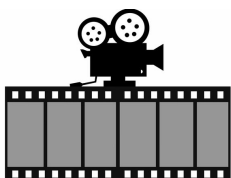


Outdoor bowlers have had a good season's bowling with the improved weather this year. The season ends on Thursday **August 28<sup>th</sup>** and is followed by the official Indoor season at Kilmakee Activity Centre.

**This begins on Tuesday 2nd September, with play at 1.45 pm - 4.00 pm on Tuesdays and at 9.45 am - noon on Thursdays.**

### FILM GROUP

#### GROUP LEADER - JUDITH PRENTICE



We are continuing to visit Lisburn Omniplex on a Tuesday evening on a fortnightly basis (depending on suitable films being available) and a good number of members attending. If you are interested in this, please contact the group leader Judith Prentice to be added to her list. She will then advise you of films chosen, with date and time.

## CROCHET

## GROUP LEADER - JEAN RYAN



Weekly meetings take place on Fridays 10:30 - 12:00.  
We recommence on **Friday 5 September**.

**As this group is full and we are currently unable to welcome new members, we feel there is sufficient interest to warrant the setting up of a second crochet or craft group within Lisburn U3A.**

## GOLF

## GROUP LEADER - MARGARET CALLAN



WEEKLY GOLF continues on Monday mornings usually at Aberdelghy.  
SUMMER GOLF outing for July is on Thursday 17th to Castlereagh Hills.  
All Welcome - just contact Margaret and ask to join the WhatsApp groups

## LET'S GO

## GROUP LEADER - GAIL POLLOCK

September's visit will be a **barge trip** on the river **Blackwater** on **Wed 17th Sept at 11am and 12.30**. Cost to be confirmed. The barge can only take 8 people at a time, so numbers are limited and will be on a first come basis. Some of us did a shorter version of this through the National Trust group, unfortunately the weather was awful, but we all agree that it was a great trip. Fingers crossed for better weather this time!  
If you won't be at the meeting and would like to join us, email me at [gpollock71@gmail.com](mailto:gpollock71@gmail.com).

## PAINTING FOR PLEASURE

## GROUP LEADER - TOMMY YARR



The painting group resumes on 9<sup>th</sup> September in the Village Hall, Hillsborough, 10:30am - 12:30.  
New members are always welcome.

## PHOTOGRAPHY GROUP

## GROUP LEADERS - KEITH INESON - WILLIAM GRANT - IAIN JAMES



The August visit to Rathlin Island was postponed until September which was very fortunate as storm Floris stopped the ferry sailings! . The visit to Rathlin Island will now take place on **Monday 1st September**. For further details please contact either Keith or Iain. Contact details, email and phone are on the last page.

## LU3A SINGERS

## GROUP LEADER - JACQUI TOWNSLEY



September meetings will be held on Friday 12<sup>th</sup> and Friday 26<sup>th</sup> September 2025 at 2.00pm in the Parish Room, Hillsborough Parish Church. The Parish Room is the building on your right as you drive through the church gates - parking is available as you drive up to the Downshire Centre and also outside the Centre.

Looking forward to seeing you all back and well refreshed after this great summer sunshine. Also very much looking forward to welcoming new members to our singing group – come along and enjoy some relaxed singing and friendship.



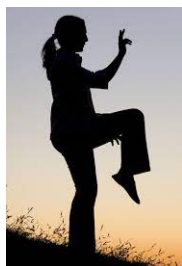
## NATIONAL TRUST

## GROUP LEADER - LESLEY KIRK

To celebrate the completion of a conservation project on the mansion's historic lace curtains, The Argory is hosting an exhibition '**Lace in Place**' which will showcase a stunning collection of handcrafted lace pieces, each reflecting the artistry and dedication of skilled makers. These works are thoughtfully displayed throughout the mansion, offering visitors a rare opportunity to see lace in context. **Guided tours of the exhibition in the house from 12 until 5.00 at weekends in September. NT members free, non NT members usual entry fee. If you would like to attend please sign the sheet at the monthly meeting or contact Lesley by email or text.**

## T'AI CHI – Mixed Ability Classes

## GROUP LEADERS - PAUL BOYCE - KATHLEEN INGLESTON



Hoping all members have had a peaceful, happy holiday break.

Our Tai Chi classes recommence on **Monday 15th September. From 11:00am - Noon.**

**Please arrive earlier that day as we will have administration to sort out and fees to be paid.**

Also we will have a new Tai Chi teacher this term - **Michael Mac**. Our emphasis in class will be health related, movement and balance. We shall keep in touch via our group WhatsApp.

Best wishes, see you soon. Paul Boyce and Kathleen Ingleston - Tai Chi group leaders.

## THEATRE & CONCERT

## GROUP LEADERS - JACQUI TOWNSLEY - KATHLEEN ROBINSON

**Dear Arabella** - Lyric Theatre, Thursday 25th September 2025 at 2.30 pm

Written by Marie Jones/Directed by Matthew McElhinney

Three women, Elsie, Jean and Arabella - three tales of love, regret and loss are subtly brought together via a random act of kindness. Full of Marie Jones' signature humour, Dear Arabella marvels at how the most commonplace chance encounters can impact lives in the most meaningful and enduring ways.

**Tickets £32 pp. Closing date for bookings Monday 6th September.**

## YOGA

## GROUP LEADERS - BRENDA PALMER - FRED A BELL



Yoga recommences on 3rd September.

Classes are Wednesday 4pm - 5pm and Thursday 11am -12am

Anyone interested in joining our group should contact Freda or Brenda.

Contact details are on the last page.

**WALKING GROUPS** - You Have A Choice Of **Five** Walking Groups With **Five** Different Levels Of Difficulty:

**LEVEL 1: STROLLERS**

**GROUP LEADER - MARY HINE**

Carrying on as usual on Mondays but our walks are always subject to weather conditions. Contact Mary if you are interested in further information.

**LEVEL 2: SATURDAY RAMBLERS**

**GROUP LEADER - GIL COLVIN**

Consider joining us on the 3rd Saturday of each month, meeting at the venue at 10.30, to walk approximately 4 miles. For details contact Group Leader.

**LEVEL 3: RAMBLERS**

**GROUP LEADER - STANLEY PRENTICE**

**LEVEL 4: RAMBLERS PLUS**

**GROUP LEADERS - KEITH INESON - WILLIAM GRANT**

Rambles continue every Monday with a Ramble Plus on the second Monday of the month. New members always welcome.

**LEVEL 5: SCRAMBLERS**

**GROUP LEADER - STANLEY PRENTICE**

Mountain walks / Scramblers take place every Thursday, predominantly in the Mourne. We join up with our fellow Scramblers from Belfast U3A for these walks. Any questions or for more information, please contact the group convener .

Editors comment

*Perhaps you noticed the word pre-sequel on page 2*

In the context of fictional narratives, a "pre-sequel" refers to a story that is both a prequel and a sequel. It occurs before the events of the previous story but is released after it.

## LISBURN U3A COMMITTEE MEMBERS

NAME	POSITION	EMAIL
Sharon Graham	Chairperson	Info@lisburnu3a.org
Rosita Storey	Vice Chairperson	
Rosita Storey	Convener of Group Leaders	
Jane Harris	Treasurer	
Edna Elliott	Administrative Secretary	
Irene Davidson	Membership Secretary	
Derek Elliott	Speakers	
Brenda Palmer	Catering and sign in Coordinator	

## ADDITIONAL POSITIONS

NAME	POSITION	EMAIL
Elodie Ellingsen	Webmaster	Info@lisburnu3a.org
Ray Fillmore	Newsletter Editor	
Darrell Mawhinney	Photo Supplement	

VENUE* KEY	
1 = Kilmakee Activity Centre	10 = Lisnagarvey Bowling Club {seasonal outdoor bowls}
2 = Lisburn Racquets Club, Belfast Road, Lisburn	11 = Tesco, Bentrin Road, Lisburn
3 = Hillsborough Village Community Centre	12 = Smyth Patterson's Café
4 = Volunteer Member's Homes	13 = Bridge Community Centre
5 = Laganview Enterprise Centre, Lisburn	14 =
6 = Happy Days {The Journey Church, Lisburn}	15 =
7 = Coach Snooker Club, Hillsborough	16 =
8 = Varied Venues	17 =
9 = Parish Room Hillsborough Parish Church	18 =

## LISBURN U3A ACTIVITY GROUP LEADERS

GROUP	Day	Time	Venue	Group Leader	Contact Email
Antiques	2nd Wed of month	7:30pm	3	Jacqui Townsley	Info@lisburnu3a.org
Archery	Every Tuesday	10:00am	1	John Sell	
Badminton	Every Wednesday	10:30am	2	Laura Molloy	
Book Group 1	1st Thurs of month	afternoon	4	Hilary Preston	
Book Group 2	Last Tues of month	10:30am	4	Joan Bryson	
Bowling Indoor	Every Tuesday Every Thursday	1:45 - 4pm 09:45 - 12:15	1	Fraser Shannon Bill Ingleston	
Bowling Outdoor Seasonal Summer	Every Tuesday Every Thursday	1:45 - 4pm 09:45 - 12:15	10	Fraser Shannon Bill Ingleston	
Bridge	Every Thursday	7:30pm	13	Ivy Long Joan Bolam	
Bridge Beginner	Every Tuesday	2pm - 3:45	12	Fionnuala O'Callaghan Rosita Storey	
Crochet	Every Friday	10:30am	6	Jean Ryan	
Dining Out	2 <sup>nd</sup> Thurs of month	6:45pm	8	Norma Patterson	
Film Group	Most alternate Tues	Evening	8	Judith Prentice	
Garden Group	Occasional	Varied	8	Paul Boyce Joan Hamilton	
Golf	Most Mondays	Varied	8	Margaret Callan	
Let's Go	Occasional	Varied	8	Gail Pollock	
LU3A Singers	2nd & 4th Fridays	2:00pm	9	Jacqui Townsley	
National Trust	Varied	Varied	8	Lesley Kirk	
Painting	Every Tuesday	10:30am	3	Tommy Yarr	
Photography	Occasional	Varied	8	Keith Ineson William Grant Iain James	
Scrabble	1st & 3rd Thurs of each month	2:00pm	2	Lynda Brownlee Barbara Primrose	
Snooker	Every Tuesday	7:30pm	7	Neville Hicks	
T'ai Chi Mixed Ability Classes	Mondays	11:00 - 12:00	5	Kathleen Ingleston Paul Boyce	
Theatre / Concert	Occasional	Varied	8	Jacqui Townsley Kathleen Robinson	
Yoga	Every Wednesday Every Thursday	4pm - 5pm 11am - 12	5	Brenda Palmer Freda Bell	
Strollers	Every Monday	10:15am	8	Mary Hine	
Saturday Ramblers	3rd Sat of month	10:30am	8	Gil Colvin	
Ramblers	Every Monday	10:30am	8	Stanley Prentice	
Ramblers Plus	2nd Mon of month	10:30am	8	Keith Ineson William Grant	
Scramblers	Every Thursday	09:30am	8	Stanley Prentice	