



Email: info@lisburnu3a.org
Website: <https://www.lisburnu3a.org/>

Next Monthly Meeting is on Thursday 31st July at 2pm
Laganview Enterprise Centre
69 Drumbeg Drive, Lisburn. BT28 1QJ
Please remember to wear your name badge and bring your cup

The speaker for the July meeting is Suzanne Barclay from the Ulster Wildlife Trust.

**Thank you to the Scrabble Group who will be at the sign-in desk
and hosting the refreshments this month.**

EMAILS: chair@lisburnu3a.org

editor@lisburnu3a.org

info@lisburnu3a.org

MEMBERSHIP

Irene Davidson

Welcome to our newest members!



★ Anne McCaffrey ★ Sally Niblock ★ Victor Davey ★ Janet Aspen ★
★ Deirdre Wilson ★ Victor Davey ★ Robin and Effie Adair ★



We now have **424** Members.

EMAILS: chair@lisburnu3a.org

editor@lisburnu3a.org

info@lisburnu3a.org

GROUP LEADER UPDATES

If the group activity you are interested in, has not written anything for the 'Group Leader Updates' which follow, then you can contact them directly from the 'Activity Group Leaders - Contact Details' on the last page.

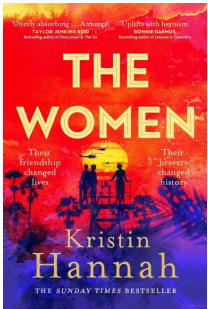
ANTIQUES AND COLLECTABLES

GROUP LEADER - JACQUI TOWNSLEY

Our next meeting will be on **Wednesday 10th September 2025** – in the meantime have a great summer!

BOOK GROUP 1

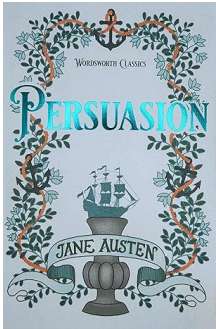
GROUP LEADER – HILARY PRESTON



Book Group I read 'The Women' by Kristin Hanna for our July meeting. The meeting took place in a members home with the usual wonderful catering. We all enjoyed the book. The story is about the nurses who served in Vietnam during the war. We felt it was a story of two parts and we're not particularly happy with the "and they lived happily ever after" ending . For August we are reading 'The Homemade God ' by Rachel Joyce .

BOOK GROUP 2

GROUP LEADER - JOAN BRYSON



We will meet on Tuesday 26th August at 10.30am. This year is the 250th anniversary of the birth of acclaimed author Jane Austen, a stalwart of school curricula and TV dramas. We are reading her book 'Persuasion' which is said to be her darkest and bleakest book with a core theme of loss set against a background of the changing social order following the Napoleonic War and of wealth based on slavery. Has Austen's writing stood the test of time and how relevant is it today?

BOWLING

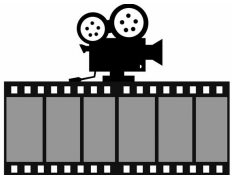
GROUP LEADERS - FRASER SHANNON - BILL INGLESTON



Despite the diversionary attractions of holidays and Wimbledon, there is still a dedicated core of lu3a bowlers turning up at Kilmakee Activity Centre and / or Lisnagarvey Greens, for play at 1.45 pm - 4.00 pm on Tuesdays and at 9.45 am - noon on Thursdays.

FILM GROUP

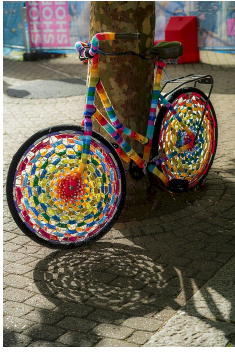
GROUP LEADER - JUDITH PRENTICE



We are continuing to visit Lisburn Omniplex on a Tuesday evening on a fortnightly basis (depending on suitable films being available) and a good number of members attending. If you are interested in this, please contact the group leader Judith Prentice to be added to her list. She will then advise you of films chosen, with date and time.

CROCHET

GROUP LEADER - JEAN RYAN



Weekly meetings take place on Fridays 10.30 - 12.00 until **Friday 27 June**, when we'll be taking our usual summer break. We recommence on **Friday 5 September**.

As this group is full and we are currently unable to welcome new members, we feel there is sufficient interest to warrant the setting up of a second crochet or craft group within Lisburn U3A.

GOLF

GROUP LEADER - MARGARET CALLAN



WEEKLY GOLF continues on Monday mornings usually at Aberdelghy.
SUMMER GOLF outing for July is on Thursday 17th to Castlereagh Hills.
All Welcome - just contact Margaret and ask to join the WhatsApp groups

GARDEN GROUP

GROUP LEADERS - PAUL BOYCE - JOAN HAMILTON



Tuesday 12th August visit to **The Hill**.

36 Ballymorran Road, **Killinchy at 2pm**. Cost of visit to the garden is **£5** Tea/coffee not provided at the garden but we will have that at a nearby hostelry. Parking is restricted at the garden so please endeavour to fill cars. To get to the garden, head to Balloo crossroads, here turn onto Beechvale Road through Killinchy then continue onto Whiterock Road, Ballymorran Road is 1st on the right. No 36 is situated on the Left after 0.5 mile. Garden entrance is on the Left at the top of a long lane.

If you wish to attend please let Joan or Paul know by 6pm on Wednesday 23rd.

Join the LET'S Go group who will be going to **Antrim Castle Gardens** on **22nd** at **10.30**, cost **£5pp**.

LET'S GO

GROUP LEADER - GAIL POLLOCK



A joint visit with the Garden Group to **Antrim Castle Gardens** on **22nd August** at **10.30**, cost **£5pp**. We'll be getting a tour with one of the rangers, which will take in the history of the house and gardens, so of interest to those who like history and/or gardens. There is a genuine 17th-century Anglo-Dutch Water Garden, the remnants of the 16th-century Massreen family, the colourful characters and the development of the gardens, including Dermot Gavin's garden.

<https://visitantrimandnewtownabbey.com/things-to-do/gardens-and-parks/antrim-castle-gardens-clotworthy-house/>

PHOTOGRAPHY GROUP

GROUP LEADERS - KEITH INESON - WILLIAM GRANT - IAIN JAMES



The next visit is on **Monday 4th August** a photographic trip to **Rathlin Island**. Please contact one of the convenors for further details.

LU3A SINGERS

GROUP LEADER - JACQUI TOWNSLEY

No more meetings until September - have a great summer!

(Dates for your diary Friday 12th and Friday 26th September 2025)

NATIONAL TRUST

GROUP LEADER - LESLEY KIRK

Third time lucky ! June and July's outings were very wet days so here's hoping **Sunday 31st August** has beautiful sunshine for an afternoon of **Jazz in the garden** with the **Martello Jazz band**. Bring a chair and possibly a picnic or buy something to eat there for lunch. Planning to get to **Mountstewart by 1.00**.

If you would like to go put your name on the sheet at the monthly meeting or email or text Lesley by Friday 29th August.

T'AI CHI – Mixed Ability Classes

GROUP LEADERS - PAUL BOYCE - KATHLEEN INGLESTON

Tai Chi classes are on a break during July and August. We look forward to returning in September with a programme which will include increased free flowing movements and short forms. Hope to see you in September (date yet to be decided). Best wishes from Paul and Kathleen.

YOGA

GROUP LEADERS - BRENDA PALMER - FRED A BELL



Yoga remains on summer break until resumption in September. Anyone who wishes to join our classes with Asha, our instructor, contact either Brenda or Freda

WALKING GROUPS - You Have A Choice Of **Five** Walking Groups With **Five** Different Levels Of Difficulty:

LEVEL 1: STROLLERS

GROUP LEADER - MARY HINE

Carrying on as usual on Mondays but our walks are always subject to weather conditions. Contact Mary if you are interested in further information.

LEVEL 2: SATURDAY RAMBLERS

GROUP LEADER - GIL COLVIN

Consider joining us on the 3rd Saturday of each month, meeting at the venue at 10.30, to walk approximately 4 miles. For details contact Group Leader.

LEVEL 3: RAMBLERS

GROUP LEADER - STANLEY PRENTICE

LEVEL 4: RAMBLERS PLUS

GROUP LEADERS - KEITH INESON - WILLIAM GRANT

Rambles continue every Monday with a Ramble Plus on the second Monday of the month. New members always welcome.

LEVEL 5: SCRAMBLERS

GROUP LEADER - STANLEY PRENTICE

Mountain walks / Scramblers take place every Thursday, predominantly in the Mourne. We join up with our fellow Scramblers from Belfast u3a for these walks. Any questions or for more information, please contact the group convener .

LISBURN U3A COMMITTEE MEMBERS

NAME	POSITION	EMAIL
Sharon Graham	Chairperson	Info@lisburnu3a.org
Rosita Storey	Vice Chairperson	
Rosita Storey	Convener of Group Leaders	
Jane Harris	Treasurer	
Edna Elliott	Administrative Secretary	
Irene Davidson	Membership Secretary	
Derek Elliott	Speakers	
Brenda Palmer	Catering and sign in Coordinator	

ADDITIONAL POSITIONS

NAME	POSITION	EMAIL
Elodie Ellingsen	Webmaster	Info@lisburnu3a.org
Ray Fillmore	Newsletter Editor	
Darrell Mawhinney	Photo Supplement	

VENUE* KEY	
1 = Kilmakee Activity Centre	10 = Lisnagarvey Bowling Club {seasonal outdoor bowls}
2 = Lisburn Racquets Club, Belfast Road, Lisburn	11 = Tesco, Bentrin Road, Lisburn
3 = Hillsborough Village Community Centre	12 = Smyth Patterson's Café
4 = Volunteer Member's Homes	13 = Bridge Community Centre
5 = Laganview Enterprise Centre, Lisburn	14 =
6 = Happy Days {The Journey Church, Lisburn}	15 =
7 = Coach Snooker Club, Hillsborough	16 =
8 = Varied Venues	17 =
9 = Parish Room Hillsborough Parish Church	18 =

LISBURN U3A ACTIVITY GROUP LEADERS

GROUP	Day	Time	Venue	Group Leader	Contact Email
Antiques	2nd Wed of month	7:30pm	3	Jacqui Townsley	Info@lisburnu3a.org
Archery	Every Tuesday	10:00am	1	John Sell	
Badminton	Every Wednesday	10:30am	2	Laura Molloy	
Book Group 1	1st Thurs of month	afternoon	4	Hilary Preston	
Book Group 2	Last Tues of month	10:30am	4	Joan Bryson	
Bowling Indoor	Every Tuesday Every Thursday	1:45 - 4pm 09:45 - 12:15	1	Fraser Shannon Bill Ingleston	
Bowling Outdoor Seasonal Summer	Every Tues & Thu	09:45 - 12:15	10	Fraser Shannon Bill Ingleston	
Bridge	Every Thursday	7:30pm	13	Ivy Long Joan Bolam	
Bridge Beginner	Every Tuesday	2pm - 3:45	12	Fionnuala O'Callaghan Rosita Storey	
Crochet	Every Friday	10:30am	6	Jean Ryan	
Dining Out	2 nd Thurs of month	6:45pm	8	Norma Patterson	
Film Group	Most alternate Tues	Evening	8	Judith Prentice	
Garden Group	Occasional	Varied	8	Paul Boyce Joan Hamilton	
Golf	Most Mondays	Varied	8	Margaret Callan	
Let's Go	Occasional	Varied	8	Gail Pollock	
LU3A Singers	2nd & 4th Fridays	2:00pm	9	Jacqui Townsley	
National Trust	Varied	Varied	8	Lesley Kirk	
Painting	Every Tuesday	10:30am	3	Tommy Yarr	
Photography	Occasional	Varied	8	Keith Ineson William Grant Iain James	
Scrabble	1st & 3rd Thurs of each month	2:00pm	2	Lynda Brownlee Barbara Primrose	
Snooker	Every Tuesday	7:30pm	7	Neville Hicks	
T'ai Chi Mixed Ability Classes	Mondays	11:00 - 12:00	5	Kathleen Ingleston Paul Boyce	
Theatre / Concert	Occasional	Varied	8	Jacqui Townsley Kathleen Robinson	
Yoga	Every Wednesday Every Thursday	4pm - 5pm 11am - 12	5	Brenda Palmer Freda Bell	
Strollers	Every Monday	10:15am	8	Mary Hine	
Saturday Ramblers	3rd Sat of month	10:30am	8	Gil Colvin	
Ramblers	Every Monday	10:30am	8	Stanley Prentice	
Ramblers Plus	2nd Mon of month	10:30am	8	Keith Ineson William Grant	
Scramblers	Every Thursday	09:30am	8	Stanley Prentice	